



## Skyline, St. Peter's Street, Leeds

### Offers In The Region Of £210,000

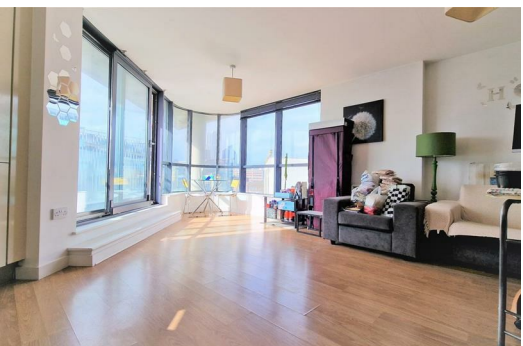
Ascend Properties are pleased to offer for sale this exquisite 2 double bed roomed apartment located in the luxury development of Skyline. Situated in the heart of Leeds City Centre, in close proximity to the Playhouse, Northern Ballet, BBC Yorkshire, John Lewis, Leeds Metro Interchange and major road transport links, this wonderfully presented apartment would suit professionals or Investors alike.

Skyline boasts a prime location within the Centre of Leeds, allowing for easy access to transport hubs, including Leeds Train Station, and with a view over the high rises of the City, this apartment won't be around for long. Located on the 3rd floor this apartment enjoys a South Westerly view from its private balcony there are few developments that boast better views than this over Leeds.

In brief the property comprises of an Entrance Hallway with Utility Cupboard, open plan Living/Dining and Kitchen space, two Double Bedrooms (the master with an en-suite shower room) enjoying further views over the City and a family bathroom fitted with a three piece suite.

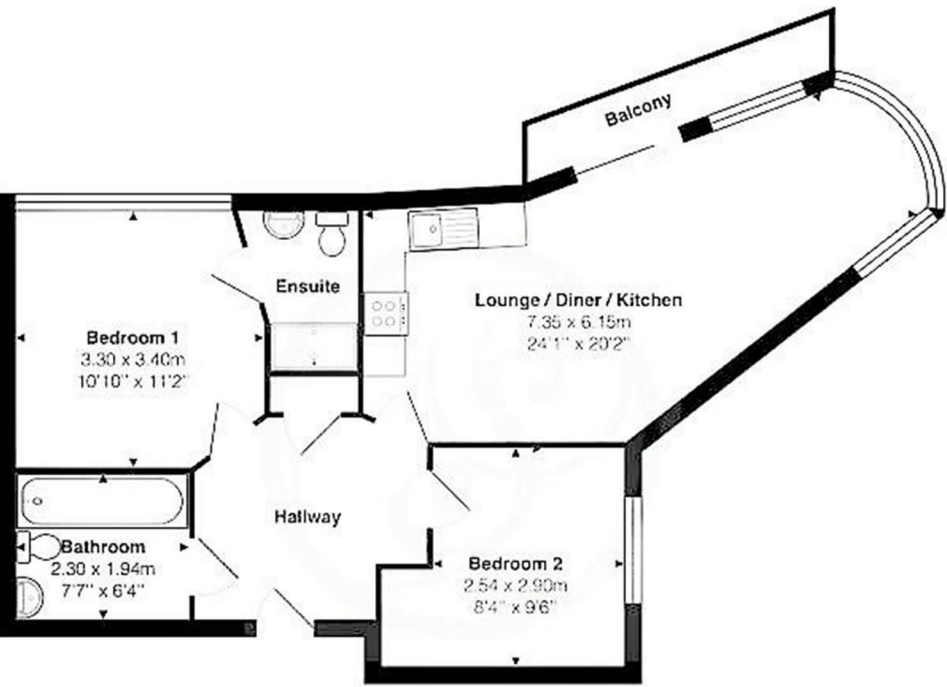
Viewings can be booked at short notice, please call today!

Tenure = Leasehold 112 years remain. Ground Rent = £250pa. Service Charges = £2468.56pa. EPC = B. Council Tax = Band D (Leeds Authority).





Apartment 30, Skyline St. Peters Street, Leeds, West Yorkshire, LS9 8BN



Skyline, St Peters Street, LS9 8BT

Total Area: 57.2 m<sup>2</sup> ... 615 ft<sup>2</sup> (excluding balcony)

Whilst every attempt has been made to ensure the accuracy of the floor plan, measurements of floors, windows and rooms and any other items are approximate and no responsibility is taken for any error, omissions or mis-statement. The plan is for illustrative purposes only and should be used as such.

